

INTERLINE

ROBOTIC POOL CLEANER SNAPPER



ENGLISH

ver 22-01



ROBOTIC POOL CLEANER SNAPPER

Congratulations on the purchase of your new Interline Robotic Pool Cleaner Snapper. It is a powerful autonomous robot delivered ready to use. This robot comes with an easy accessible debris bag.

Please check the package to make sure that all parts are ready to be installed.

If any parts are missing or damaged, please contact Interline directly on www.interline-products.com

Note: *The colors of the robot may vary in this manual and are for illustrative purposes. For that reason, no rights may be derived from this publication.*

Table of contents

01 Product features	p04.
02 Warnings and Safety information	p04.
03 Package contents	p05.
04 Start-up	p06.
05 Adjusting Direction and Speed Control	p08.
06 Cleaning the filter bag	p09.
07 Cleaning the impeller	p10.
08 Cleaning the rollers	p10.
09 Troubleshooting	p11.
10 Spare parts list	p14.
11 Spare parts drawing	p15.

01 Product features

Maximum Depth: 1,20m
Maximum size of the pool: 4.50m
Input current: 100-130V AC / 200-230V AC
Output current: <20VDC

02 !! Warnings and Safety information !!

- 2.1 Please refer to the rules of your country regarding swimming pool safety.
- 2.2 Place the power transformer at least 3.5 m from the pool.
- 2.3 If the cables delivered are damaged, they must be replaced by the manufacturer, a service centre approved by the manufacturer or a qualified person to avoid any risk.
- 2.4 Please make sure that your electrical system is well protected by a 30mA ground fault circuit interrupter (GFCI)
- 2.5 Do not use extension cord.
- 2.6 This unit must only be used with the supplied transformer.
- 2.7 This appliance can be used by children aged from 8 years and above and persons with reduced physical, sensory or mental capabilities or lack of experience and knowledge if they have been given supervision or instruction concerning use of the appliance in a safe way and understand the hazards involved.
Children shall not play with the appliance.
Cleaning and user maintenance shall not be made by children without supervision.
- 2.8 Keep the power transformer away from moisture.
- 2.9 Do not use the robot out of the water.
- 2.10 Make sure that the transformer is disconnected before performing maintenance on the robot.
- 2.11 Don't use any damaged power cable or cord.
- 2.12 Do not use the robot if people are in the pool.
- 2.13 Do not use the swimming pool when the cleaner is in the pool.
- 2.14 Remove the robotic cleaner from the swimming pool when not in use
- 2.15 The use of the robot should be in a pool whose temperature is between 5 and 36°C.
- 2.16 Make sure to maintain a pH close to 7.2 for optimal performance, especially on the ability to climb walls.
- 2.17 Do not use the robot if you have a counter-current swimming device working.

03 Package contents

1. Robotic pool cleaner Snapper with floating cord
2. Power transformer control box
3. Sample of fine filter



QUICK FACTS

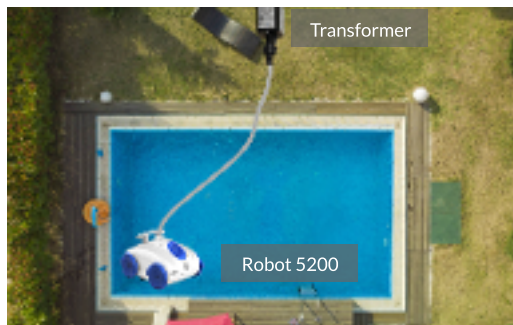
- Our robots are designed to facilitate the maintenance of your pool. However, they are not intended to clean a pool full of algae and leaves (ex: end of winter period). In this case you must: use the leaf skimmer, clean the filter and put back on the filter and the pump.



- To remove the cleaner from your pool, lift the cable slowly and gently until you can grab it by the handle. Use the handle to fully pull out the cleaner.

- Not suitable for salt water.

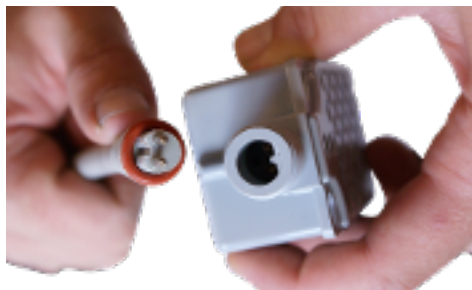
04 Start-up



4.1 Place your power box to a midpoint between the two ends of your pool and at least 3.50 m from the edge of the pool.



4.2 Place the robot in your pool and wait until it is completely submerged. If necessary, help it to sink manually.



4.3 Insert the end of the floating cable into the socket. Take note of the orientation of the plug and socket.

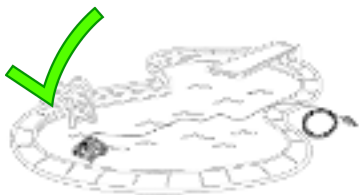


4.4 Connect the transformer to a socket. You will see a blue light on the transformer.



4.5 To Turn off your robot, unplug the transformer. The cleaner will automatically stop after 1 hour of use. To start a new 1 hour cleaning cycle:

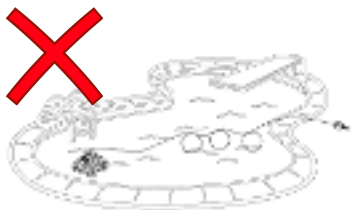
- Unplug the transformer
- Wait 2 or 3 minutes
- Plug the transformer again



4.6 For optimal performance, place your robot in the pool at the furthest possible location from the power source.

This is the appropriate length of the cable so that the robot can reach all of your pool.

Limit the length of cable in the pool to the bare minimum, and place the surplus outside the pool.



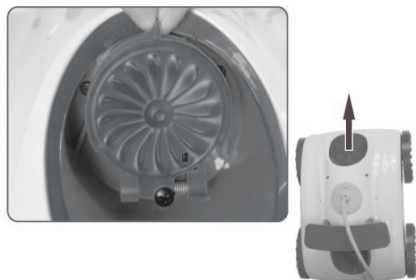
4.7 Do not remove your robot out of water immediately after the end of its cleaning cycle so as not to cause a temperature shock.

4.8 When the cleaner is no longer used for an extended period, store your robot indoors.

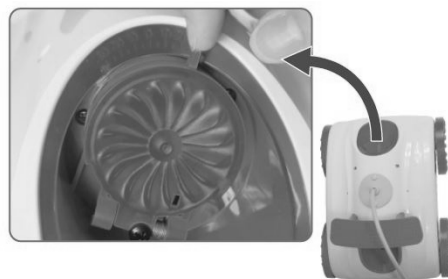
NOTE:

Leaving too much cable in the pool will limit the effectiveness of the cleaner and result in faster cable entanglement.

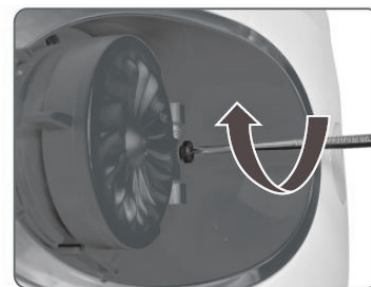
05 Adjusting Direction and Speed Control



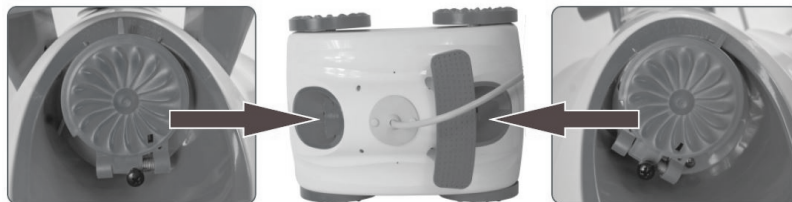
5.1 To adjust the direction of the robot, rotate the outlet cover. The direction of the robot will be determined by the position of the indicator.



Note: with indicator on vertical position, the robot will go straight ahead. With indicator turned right, the robot will go left. With indicator turned left, the cleaner will go right.



5.2 To adjust the speed of the robot, use a screw driver to turn the screw at the bottom of the cover. Screwing out increases the speed and screwing in decreases the speed.



5.3 For most pools, it is recommended that the outlet cover at both ends do not share the same direction. For best performance have outlet at the hinge end of the cleaner be straight and then the outlet at the front of the cleaner rotated

NOTE:

These are recommended settings. Depending on the shape and size of your pool, you may have to play on direction and speed adjustments to reach the optimized setting for your pool

06 Cleaning the filter bag



6.1 Press in the button at the front of the cleaner and lift up the top shell. Continue to lift up the shell until you hear a "click" at the hinge and the shell stays in place.



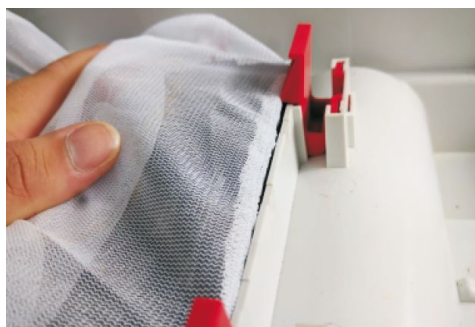
6.2 Pull back the red tabs on one side and completely lift up bag frame on that side.



6.3 Repeat for opposite side.



6.4 Pull off the elastic band on the bag from frame



6.5 Dump out the debris inside the bag. Use a hose to spray water and clean the bag.

6.6 Wrap elastic band of bag back onto the frame. Align the red ribbon with the tab of the black plastic frame.

Pull back the red tabs and push the frame back into the opening. The frame is all the way in when the tabs are sitting on top of the frame.

07 Cleaning the impeller

NOTE :

Some debris can clog or be wrapped around the impeller of the pump. By force, these debris can hinder the proper functioning of the robot or even damage the engine.

Regular visual inspection is part of the normal maintenance of the robot.



7.1: Remove the flap assembly to clean the dirt or hair on impeller



7.2: Use a flat screw driver to pry the flap assembly out as shown



7.3: Snap the flap assembly back after cleaning

08 Cleaning the rollers

NOTE :

Green rollers on the bottom of the cleaners are installed with bearing balls and must rotate freely. Some debris can clog or be wrapped around the rollers, preventing the cleaner moving at the right speed or not move at all.

Regular inspection is part of the normal maintenance for the robot.



8.1: Manually rotate the green rollers. They should turn easily. If debris is blocking the rotation, remove the debris



8.2: If the debris are not easy to access, use a flat screw driver to temporary remove the rollers. Push tab as shown in picture to remove.



8.3: After cleaning the roller, snap it back in.

9 TROUBLESHOOTING

PROBLEM	CAUSE(S)	SOLUTION(S)
<p>The robot floats on the surface.</p>	<ul style="list-style-type: none"> - Immersion of the robot in the pool. - Use of the fine filter. - Water level in the pool. 	<ul style="list-style-type: none"> - When you put the robot in the pool, let it sink and reach the floor before you turn it on. - If you use an optional fine filter, remove the filter from its plastic wrap, immerse the filter in the water so that it is already wet before you put it in the robot and let the robot settle on the floor before you turn it on. - If your pool water level is too high, the robot might turn around and take in the air if it touches the top seats, in this case to adjust the level of the pool.
<p>The robot does not clean all areas of the pool.</p>	<ul style="list-style-type: none"> - Not enough / too much cable floating in the pool. 	<ul style="list-style-type: none"> - Make sure the length of floating cable introduced in the pool is just the required length. - Remove any excess cable length from the pool and leave this excess length outside the pool next to the power supply box. - Insert the robot at the center point of the pool. If your pool is oval or rectangular, this point is the middle of the length.
<p>The robot does not recover debris during operation. Fine particles (dust or dirt, pollen ...) are ejected by the impeller.</p>	<ul style="list-style-type: none"> - The robot does not receive enough power. - Bag clogged / full. - An object is stuck in the impellers or the grids located in front of the impeller. - Debris are too fine, the robot is made to pick up the particles more than 50 microns (with the fine filter inside the basket). 	<ul style="list-style-type: none"> - Check the connection of the cables. - Clean the bag. Clean the fine filter if you use this accessory. - Check if the bag is properly inserted. (See chapter Cleaning of the filter bag). - Check that there are no foreign objects in the impellers or blocked in the grid in front of the impellers. - Check the attachment of the bag, press it if necessary to lock it. - Use a fine filter (check item number on the parts drawing 16, sku 51390 filters) on the other hand do not forget that it is the filtration of your swimming pool which ensures the cleaning of the particles of less than 50 microns.

PROBLEM	CAUSE(S)	SOLUTION(S)
The robot moves in one direction.	<ul style="list-style-type: none"> - An object blocks the rollers, the wheels of the robot or interfering with the movement of the robot. 	<ul style="list-style-type: none"> - Unplug power supply and take robot out of water. Open the cleaner to inspect the cleaner. - Check that there are no foreign objects in the impellers. - Check that there are no foreign object blocking the rollers located below the cleaner.
The robot does not move and the filtration pump does not work either. The robot doesn't work any longer.	<ul style="list-style-type: none"> - The robot is not connected to a power source. - Power off 	<ul style="list-style-type: none"> - Check that the power source is active by plugging another device into the power outlet. - Check that the power supply is turned on. - Check all connections of the robot to the power source. - Check that there are no foreign objects in the impellers.
The pump runs but the robot does not move. The robot turns on but stays on the spot.	<ul style="list-style-type: none"> - No / not enough power is transmitted to the robot. - An object blocks the rollers. - Possibility of motor problem. 	<ul style="list-style-type: none"> - Unplug the power and take out the robot in the water. Open the cover of the basket and remove the basket. - Check that there are no foreign objects in the impellers. - Check that there are no foreign object blocking the rollers located below the cleaner. - Contact the After-sales Service
The robot stops after a few minutes.	<ul style="list-style-type: none"> - Connection of the floating cable. - Possibility of fault of the floating cable. - Possibility of motor leakage. 	<ul style="list-style-type: none"> - Check the connection of the floating cable. Disconnect and reconnect as needed. - Check the status of the connectors at the ends of your cables (damaged, rusted, etc.)
The robot moves slower than before.	<ul style="list-style-type: none"> - The robot is too heavy. - The flow is not sufficient. - Cables connections. 	<ul style="list-style-type: none"> - Check the bag and clean it if necessary. - Check that there are no foreign objects in the impellers. - Check that there are no foreign object blocking the rollers located below the cleaner. - Check the status of the connectors at the ends of your cables (damaged, rusted, etc.)

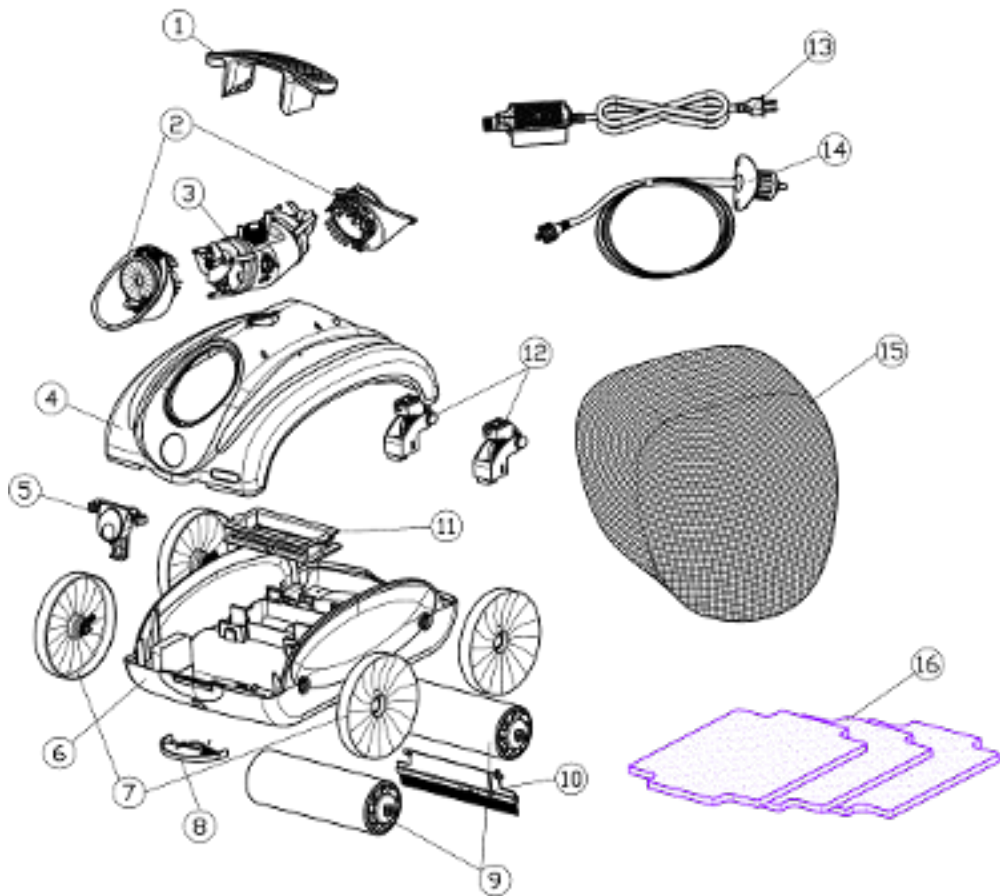
<i>PROBLEM</i>	<i>CAUSE(S)</i>	<i>SOLUTION(S)</i>
No led lit on the transformer.	- No current is coming.	<ul style="list-style-type: none">- Check your electrical outlet .- Check the connections.- contact our Customer Service.

Please contact www.interline-products.com if you have any other questions.

10 Spare parts list

<i>DRAWING : ITEM NUMBER</i>	<i>SKU</i>	<i>PART DESCRIPTION</i>
1	51320	Hydrofoil handle. Blue
2	51090	Pump outlet flap assembly. Blue
3	51061	Pump motor
4	51300	Top shell. White
5	51350	Latch lock. Grey
6	51310	Bottom chassis. White
7	51250	Side wheels. 4 pieces
8	51340	Quick drain flap. White
9	51050	Roller tubes. 2 pieces
10	51490	Sweeper brush
11	51040	Filter bag frame
12	81000	Door hinge set
13	30100	Power supply.
14	33100	floating cord
15	51030	High flow filter bag
16	51390	Fine filtration replacement kit (optional)

11 Spare parts drawing



INTERLINE

